



# HINKLEY HOME AUTOMATION APP

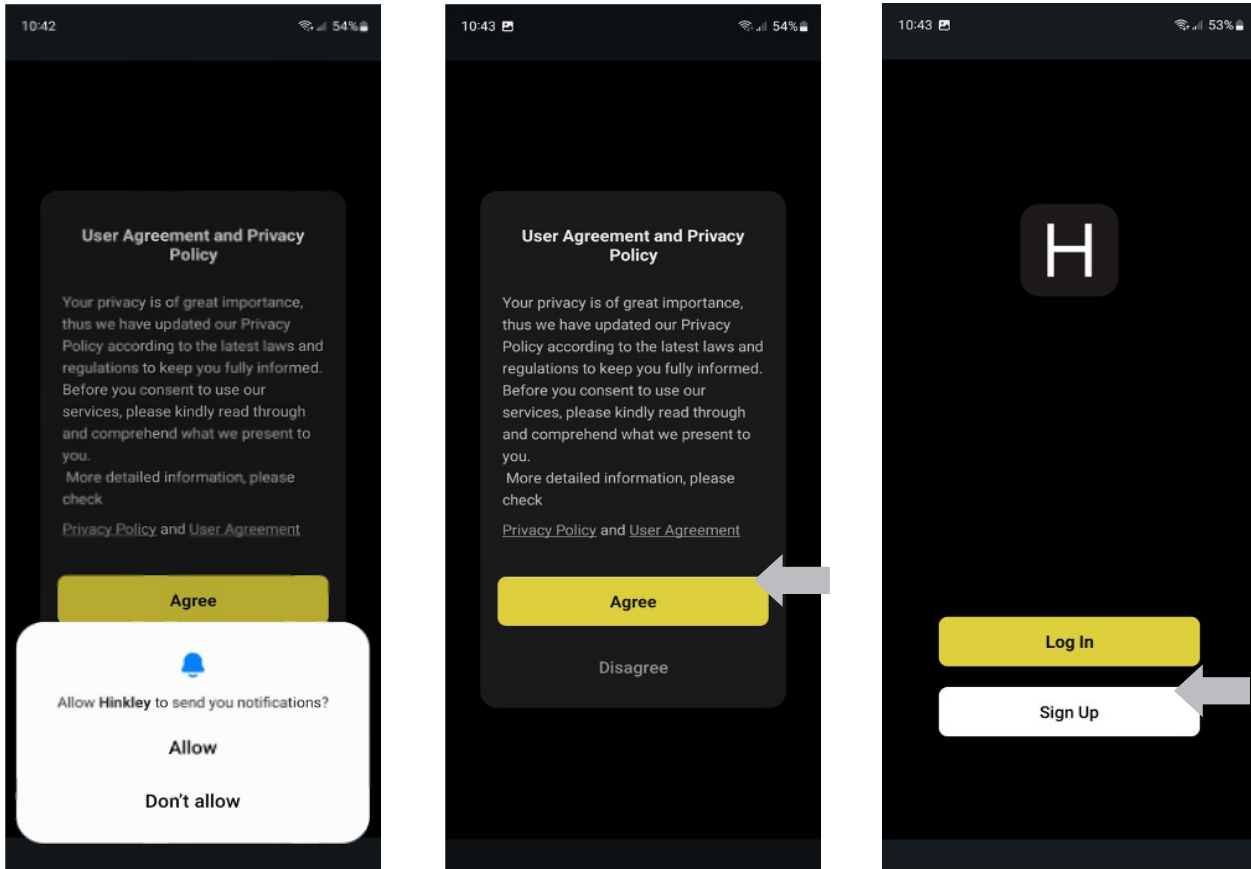
## LANDSCAPE SETUP

[Signing Up | Page 2](#)

[Adding a Landscape Dimmer | Page 6](#)

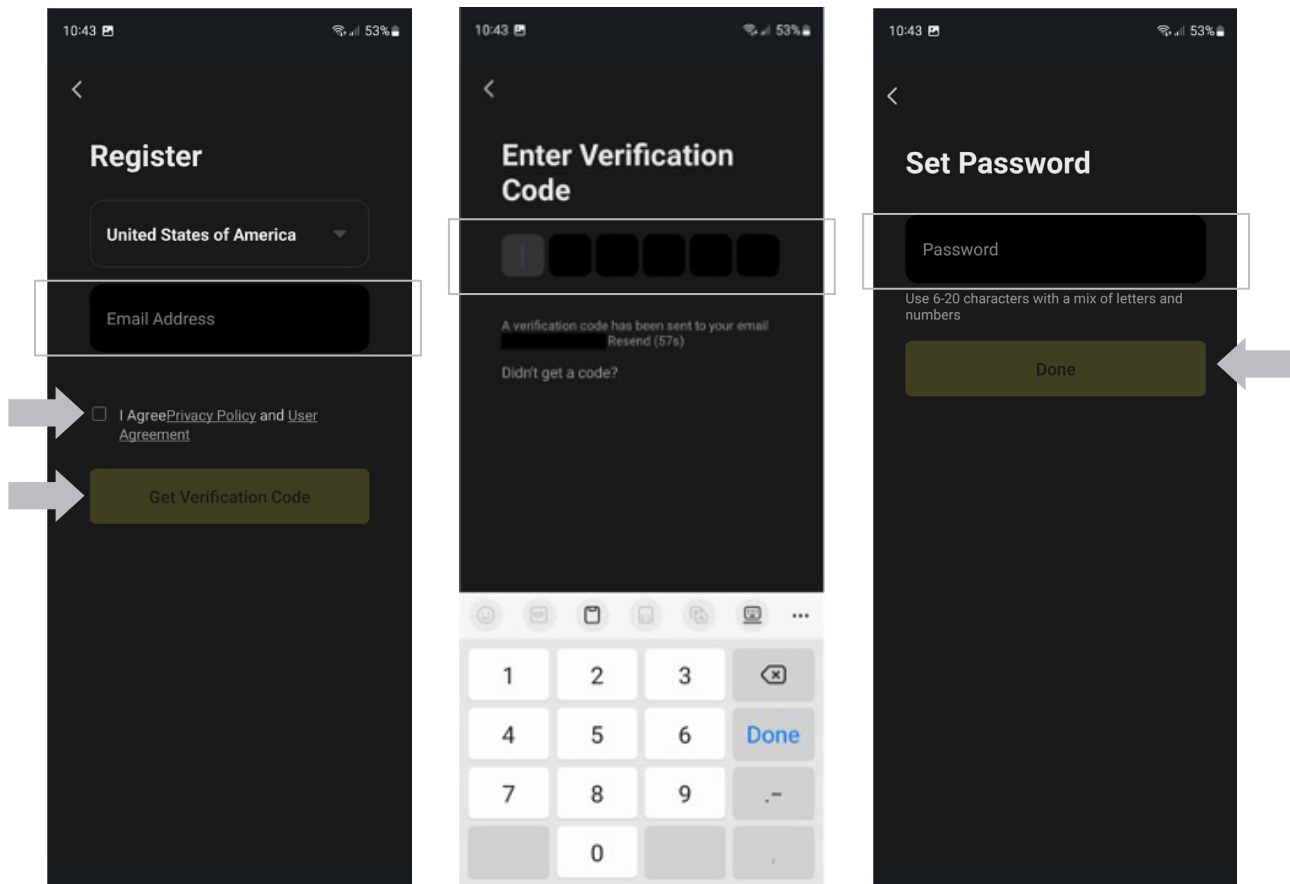
---

# SIGNING UP

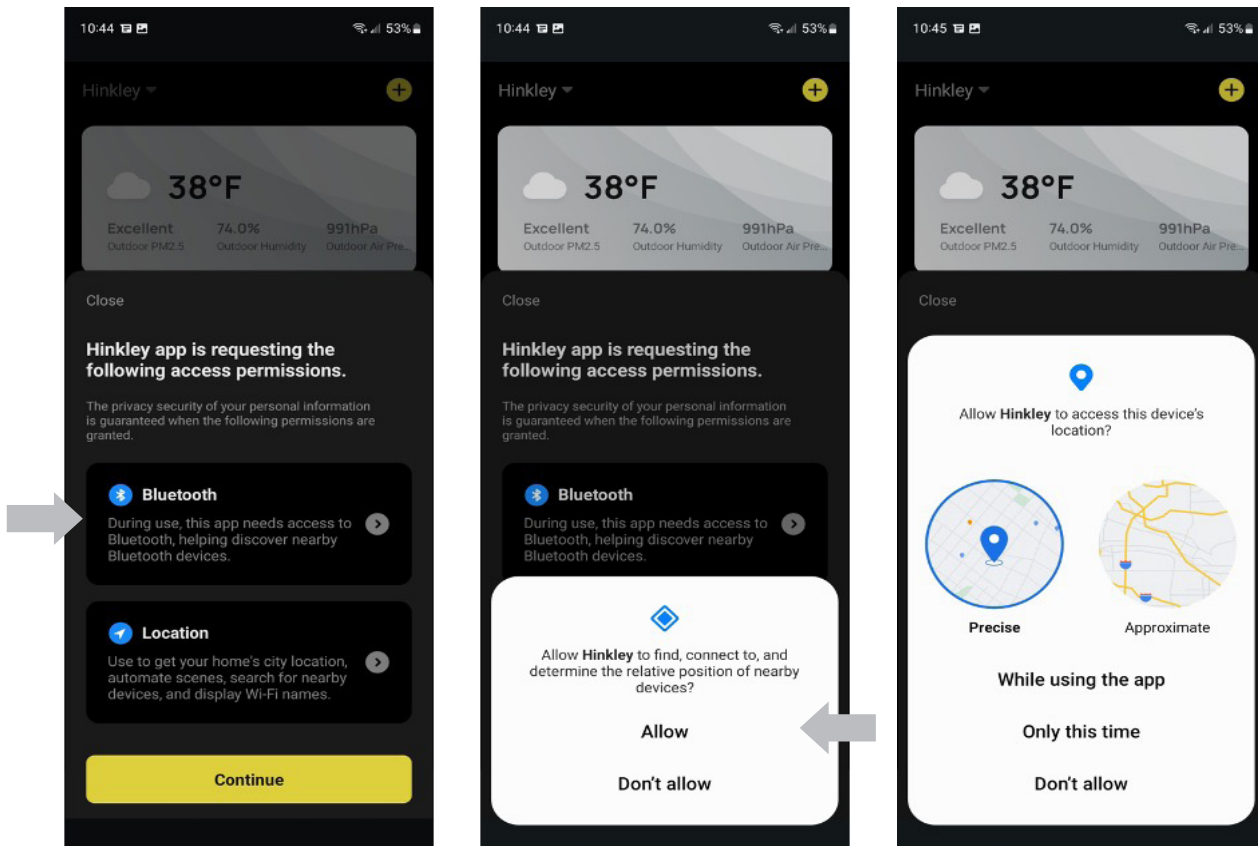


Open Hinkley Home Automation app

1. "Allow" or "Don't Allow" notifications
2. Agree to the privacy policy
3. Click "Sign Up"



4. Write your email and agree to the Privacy Policy, then click "Get Verification Code"
5. Enter the Verification Code sent to your email
6. Set a password for your account, then click "Done"

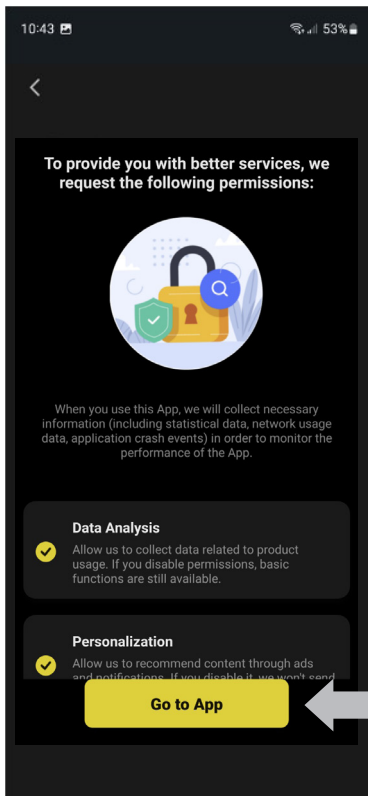


## 7. Allow Bluetooth and Network Access Permissions

Please note that Bluetooth and Network Access permissions are required for pairing and controlling your devices. Location permissions are optional and do not affect the device's performance.

Select Bluetooth and network access permissions and select "allow" for each. If you "allow" location permissions, a weather tile at the top of the page will update to your current location. You can use the weather data for scheduling commands!

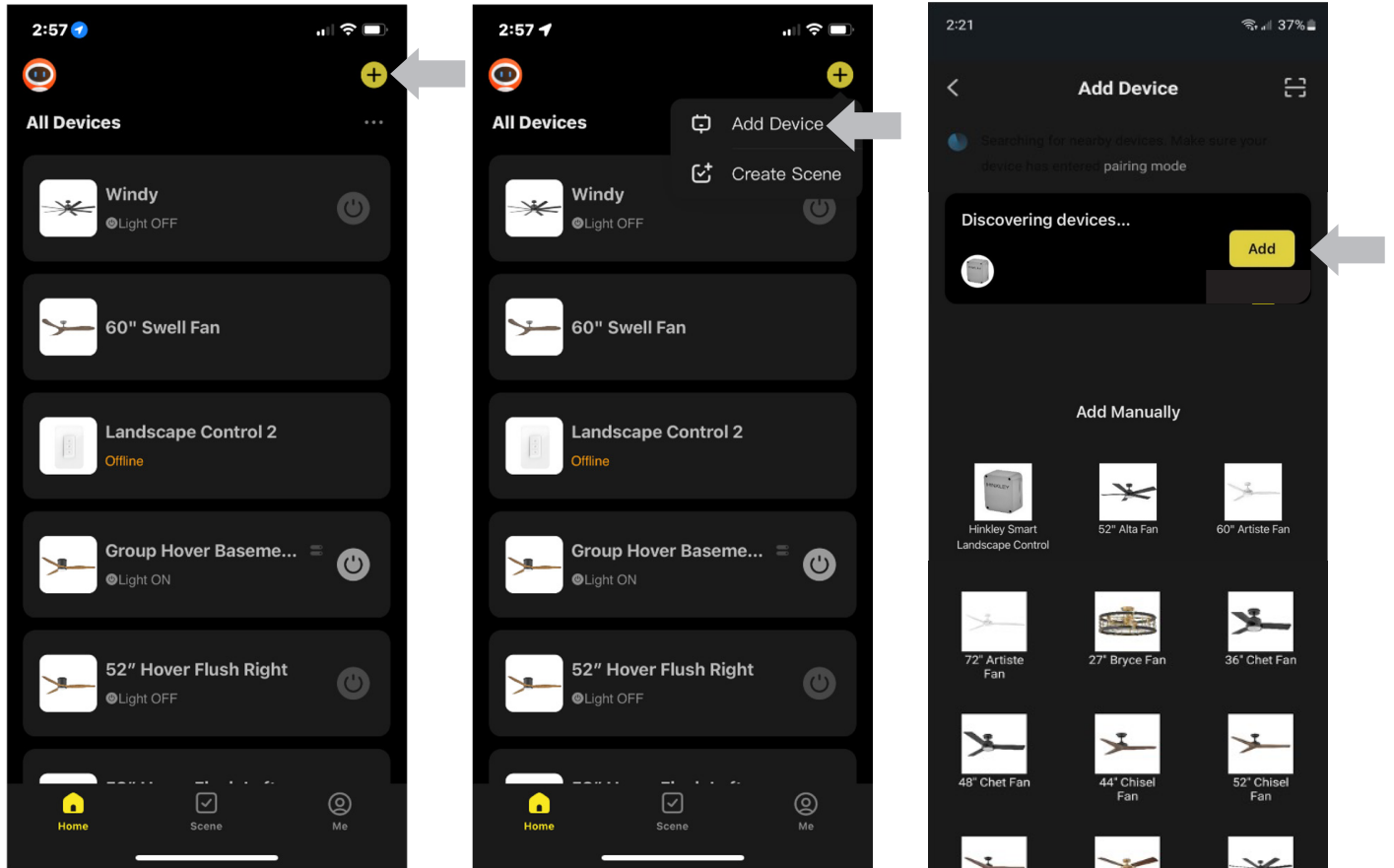
Make sure your personal device's Wi-Fi is ON and connected to your network.



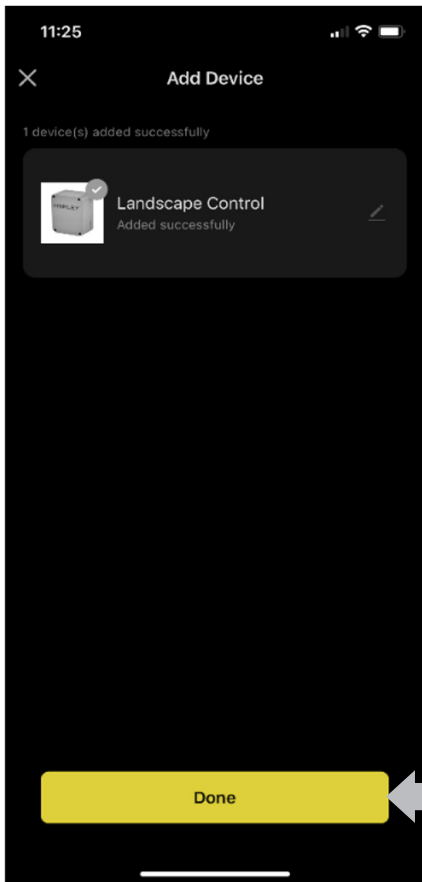
8. Click “Go to App.” **Sign-up is now complete!**

Note: Data collected is related to product usage, which allows us to better develop the app. (Functions used, Hours used, etc.)

# ADDING A LANDSCAPE DIMMER SWITCH



1. From the Home screen, click on the “+” icon
2. Choose “Add Device”
3. Click the “Add” button once the device is discovered



4. Click “Done” to finalize adding the switch

### Controlling two different groups (Zones) of fixtures:

You can connect and control Zone 1, Zone 2, or both zones simultaneously. Each Zone will correspond to a group of fixtures wired together.