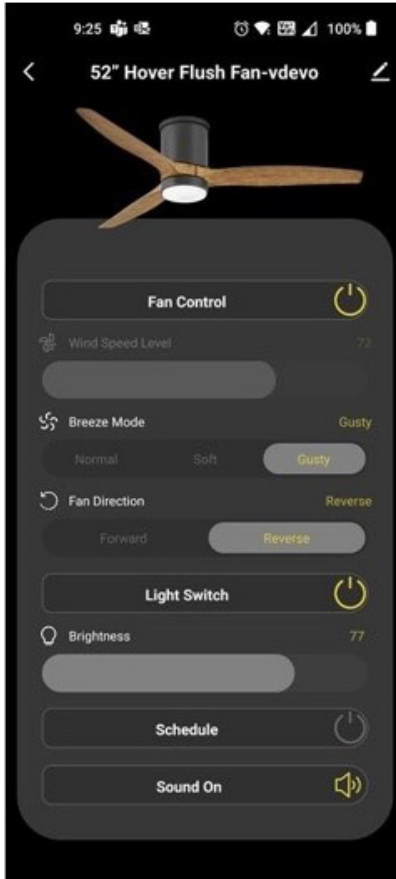




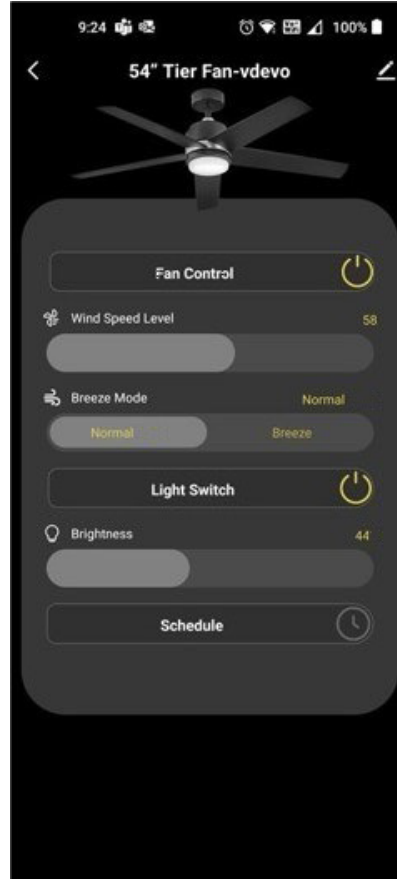
# HINKLEY HOME AUTOMATION APP

SMART FAN FUNCTIONALITY

# CONTROLLING YOUR FAN



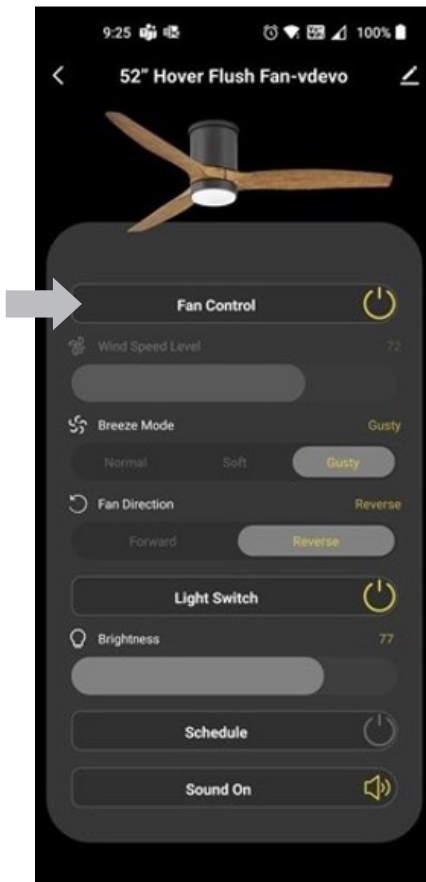
DC Fan - 6 Speed



AC Fan - 3 Speed

Once you have added a fan to your app, the following page will appear where you can control your fan.

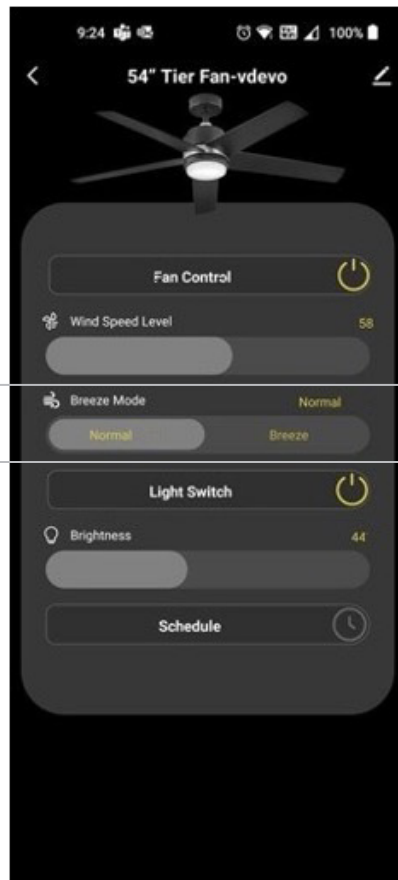
Note: The interface for 6 Speed DC Fans will appear slightly different from 3 Speed AC fans. (See Examples above)



1. Tap the Fan Control button to turn the fan On or Off
2. Slide the Wind Speed Level button to set the desired speed level (1% - 100%) while in normal breeze mode.  
(See Page 4 for Breeze Mode settings)



DC Fan - 6 Speed



AC Fan - 3 Speed

3. Select a Breeze Mode:

**6 Speed DC Fans:**

Normal: Manual Control Of Fan Speeds Using Slide Bar Above

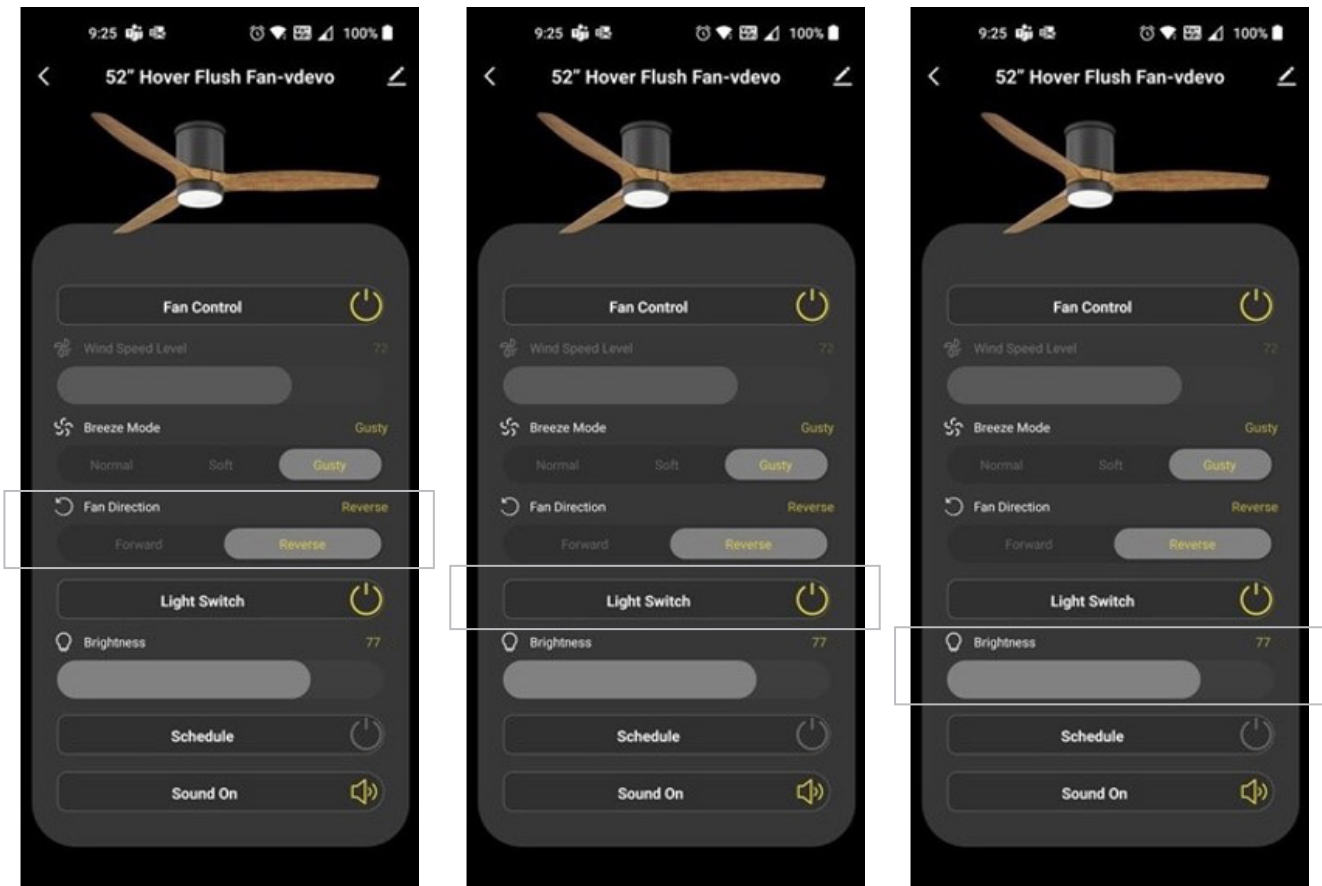
Soft: Random Toggles Between Speeds 1 – 3 every 15 seconds

Gusty: Random Toggles Between Speeds 4 – 6 every 15 seconds

**3 Speed DC Fans:**

Normal: Manual Control Of Fan Speeds Using Slide Bar Above

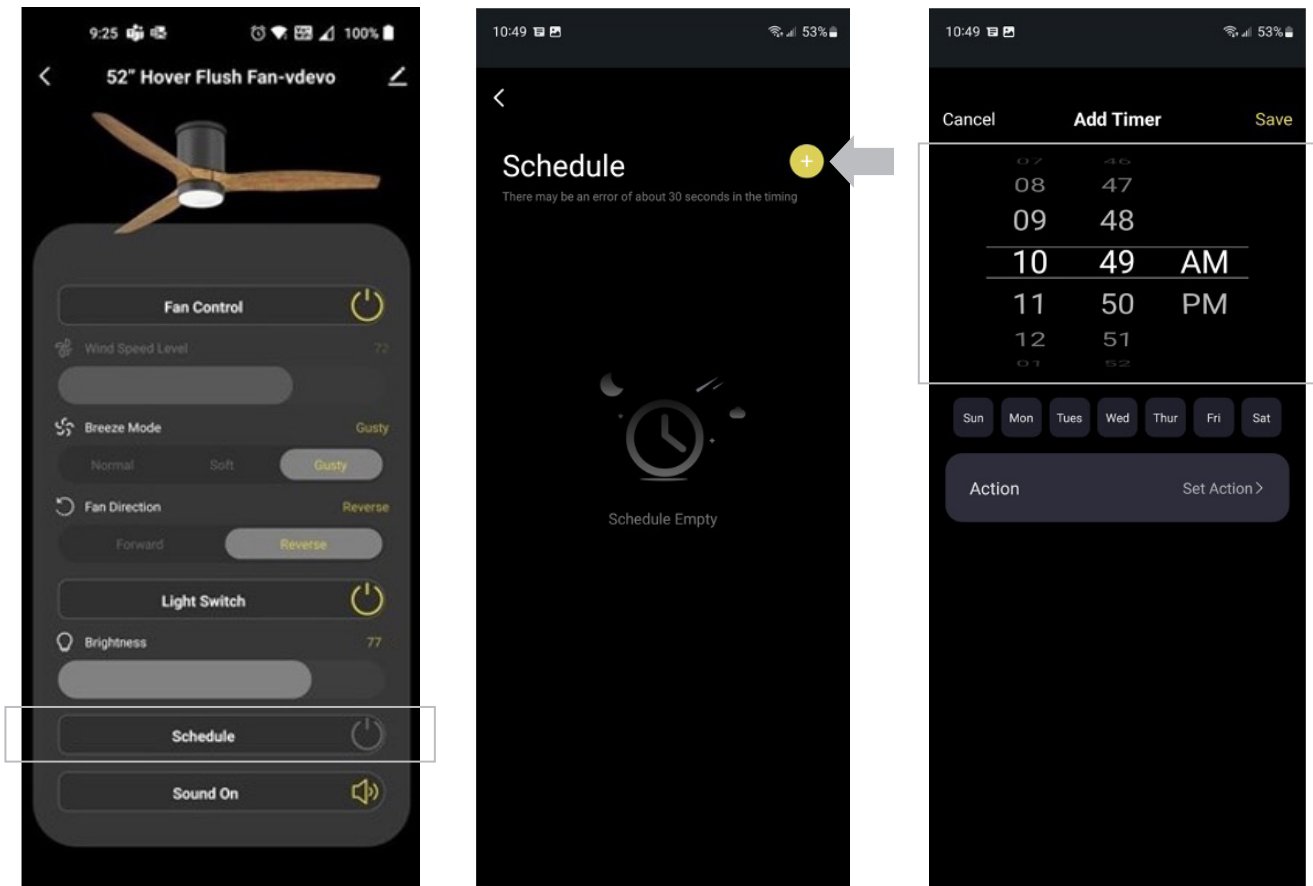
Breeze: Random Toggles Between Speeds 1 – 3 every 15 seconds



4. Choose the Fan Direction, Forward or Reverse (For DC fans only)

5. Tap the light switch button to turn the fan light On and Off

6. Slide the brightness button to set the desired brightness (1% - 100%)

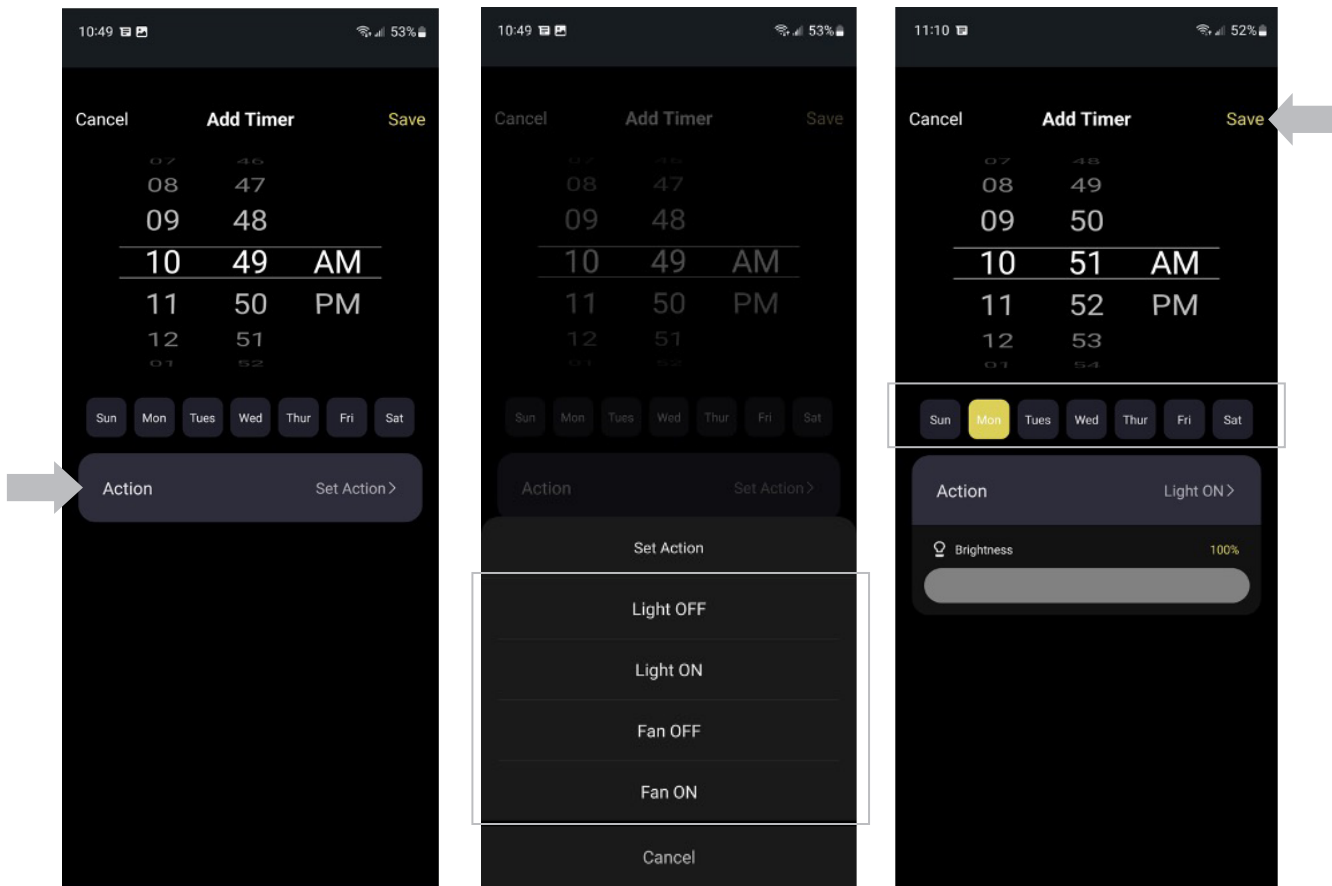


7. Tap the "Schedule" Panel at the bottom of the page to schedule a light or Fan setting individually

Please note the scene tab allows for multiple device control and multiple device functions scheduling all at once

8. Click the "+" button to add a Schedule

9. Select your desired time

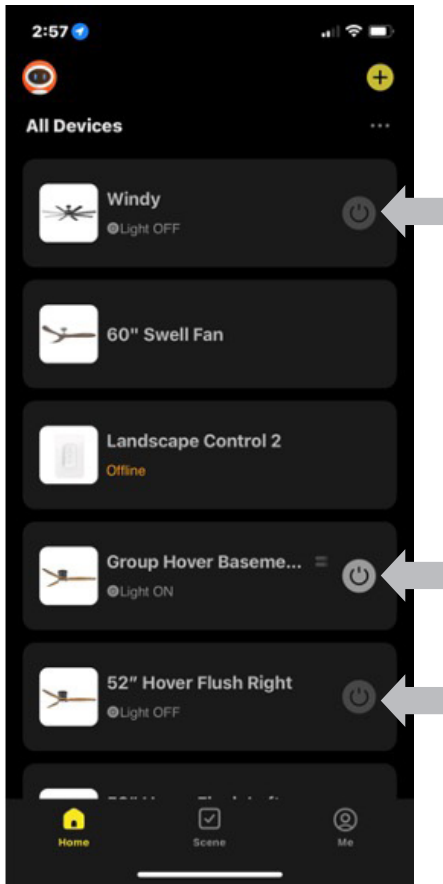


10. Click "Action / Set Action"

11. Choose your desired action

12. Choose your designated day(s), then click "Save"

Note: The schedule setting does not ask about a specific date. Only day(s) of the week.

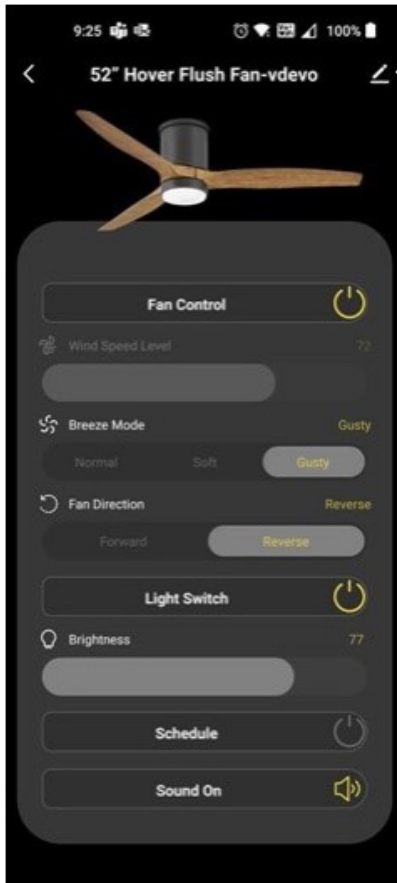


## Quick On/Off Switch

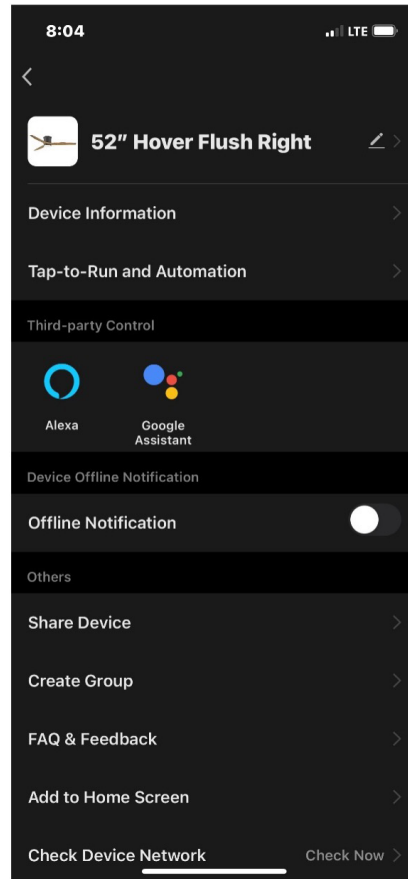
On the "Home" screen, click the power button to quickly turn the light on/off



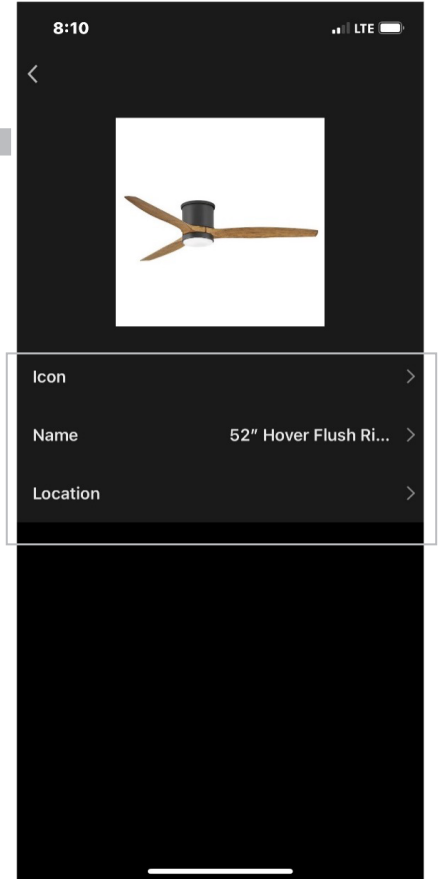
# DEVICE SETTINGS



Access to Fan Settings



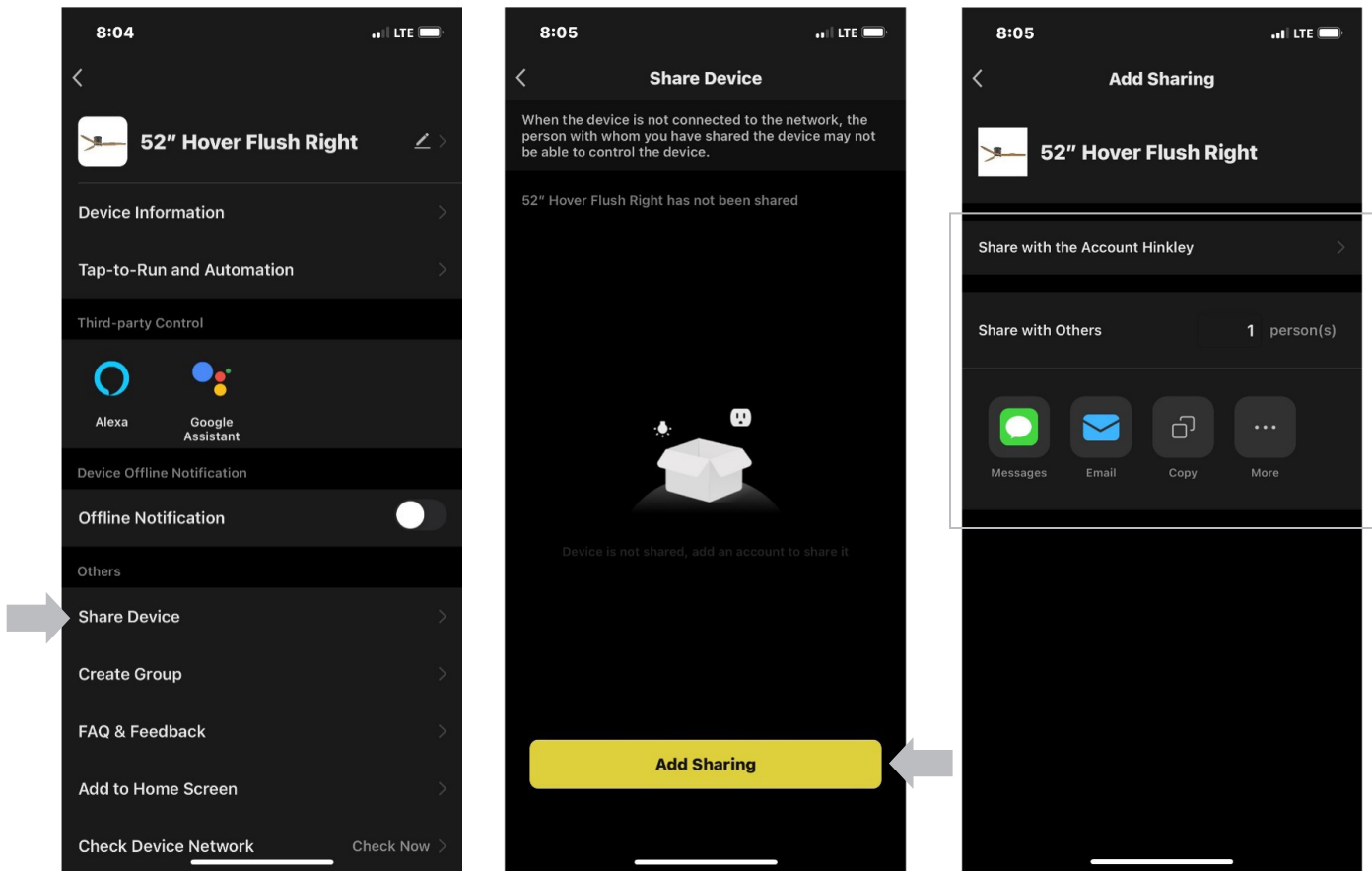
Fan Naming / Location



Click on the edit icon  in the top right corner of the fan page to enter **fan settings**

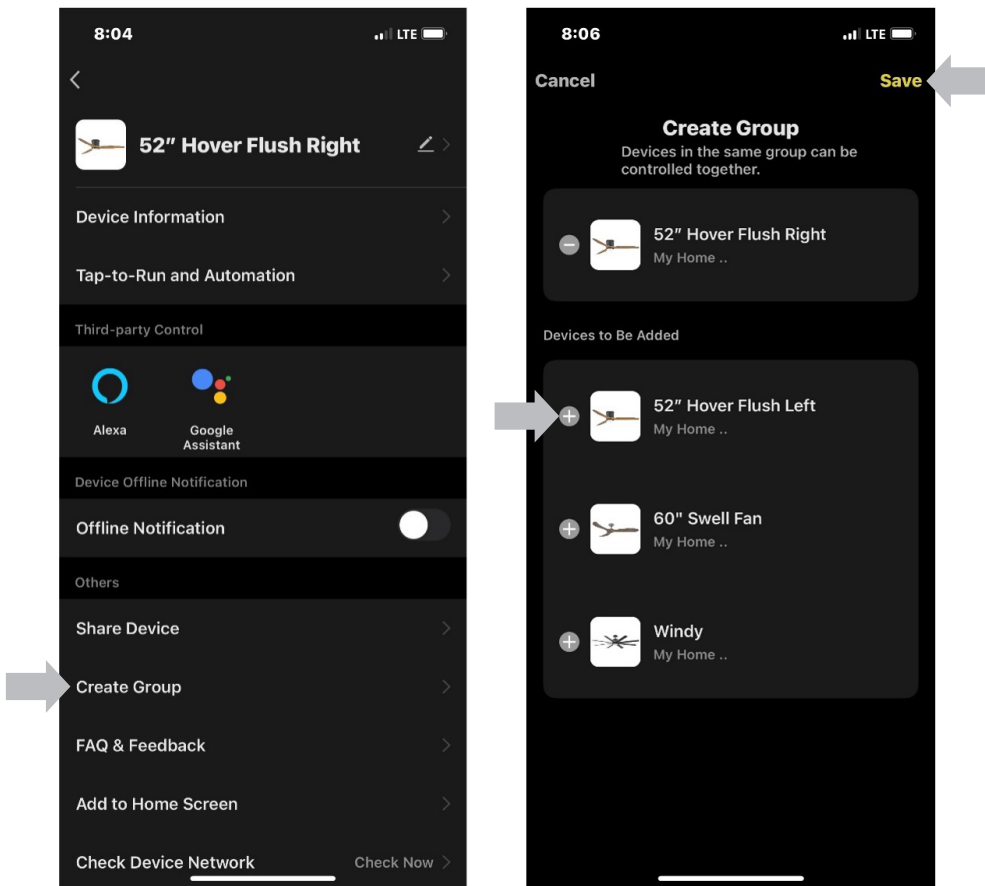
## Fan Naming / Location:

Click on the arrow beside the fan name to control the icon, name, and location name of the fan



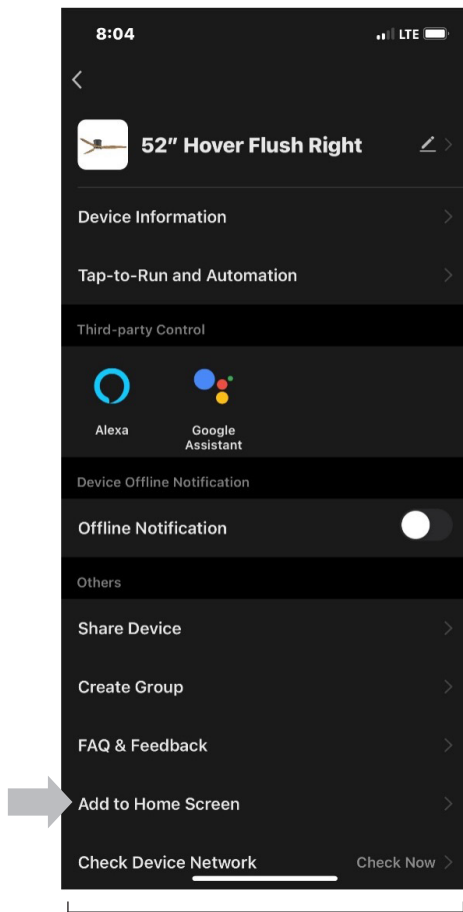
## Device Sharing:

1. Click on "Share Device"
2. Then click "Add Sharing"
3. Select a method to share the device with others

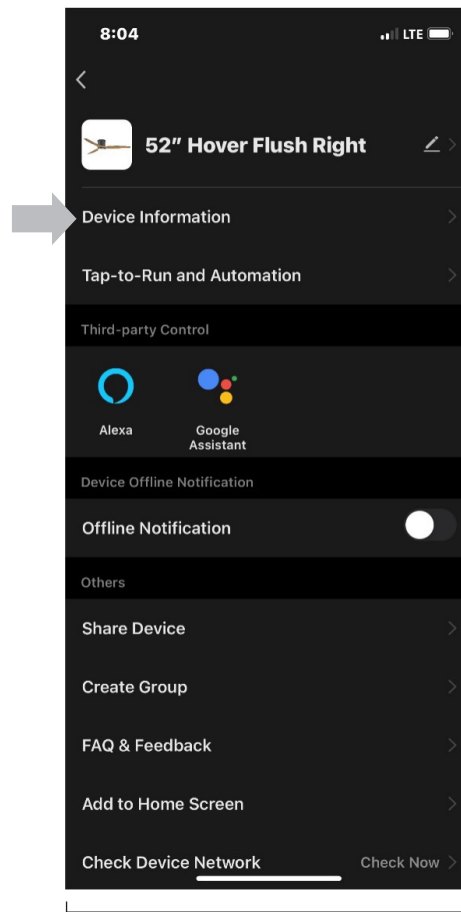


## Grouping Devices:

1. Click on "Create Group" to control multiple devices with a single command
2. Select devices to add to the group
3. Click Save



Add to Home Screen



Device Information

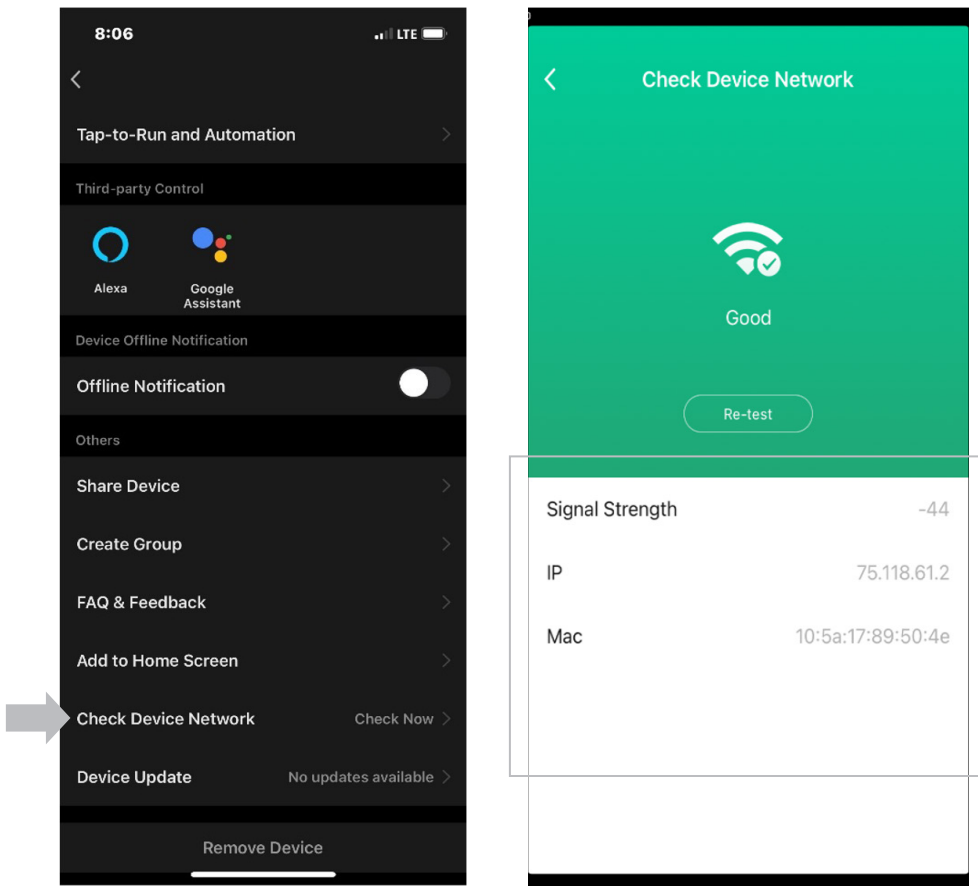
## Add Fan Shortcut to your Home Screen:

1. Click “Add to Home Screen” to create a shortcut icon for the fan on your phone/tablet home screen.

## Device Information:

1. Click “Device Information”

The Device Information tab contains personal device information, including: IP Address, MAC Address, Signal Strength, Time Zone

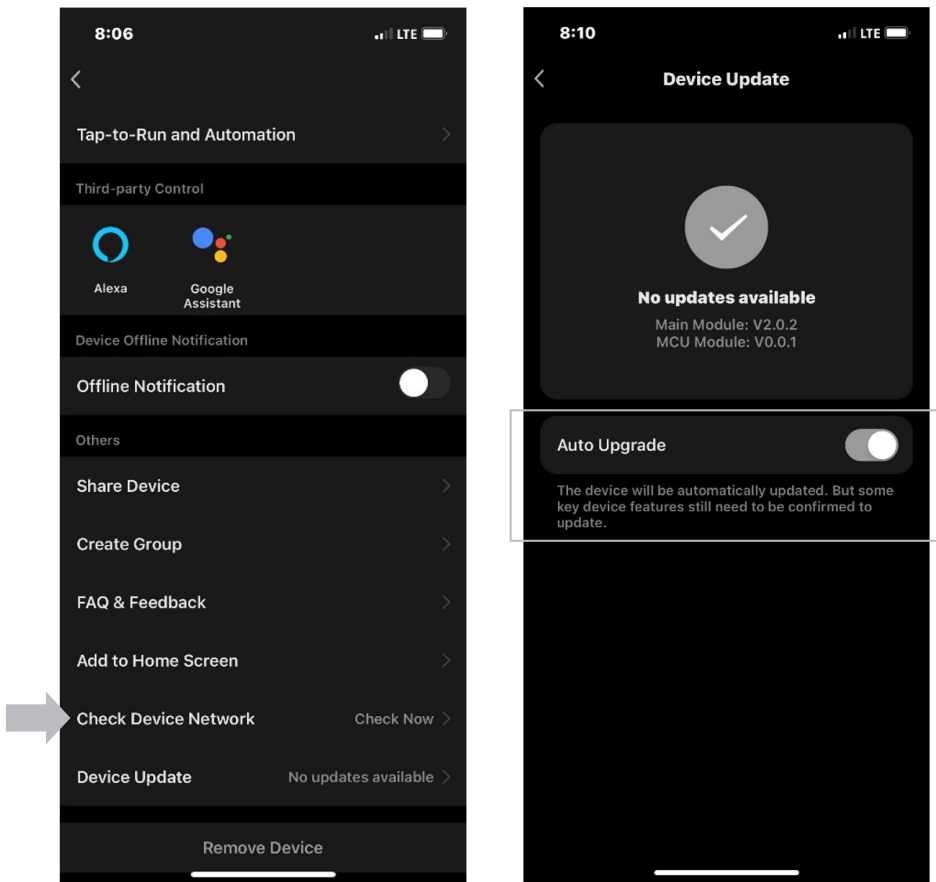


## Network Signal Strength:

1. Click on “Check Device Network” to check the signal strength

Check your network if you are having issues with connection.

Confirm that your device is connected correctly and your network works as expected. A 2.4GHz network is required.



## Device Updates:

1. Click on “Device Update” to check for updates or enable the “Auto Upgrade” feature

This updates firmware to the device only, not the app itself.