



HINKLEY HOME AUTOMATION APP

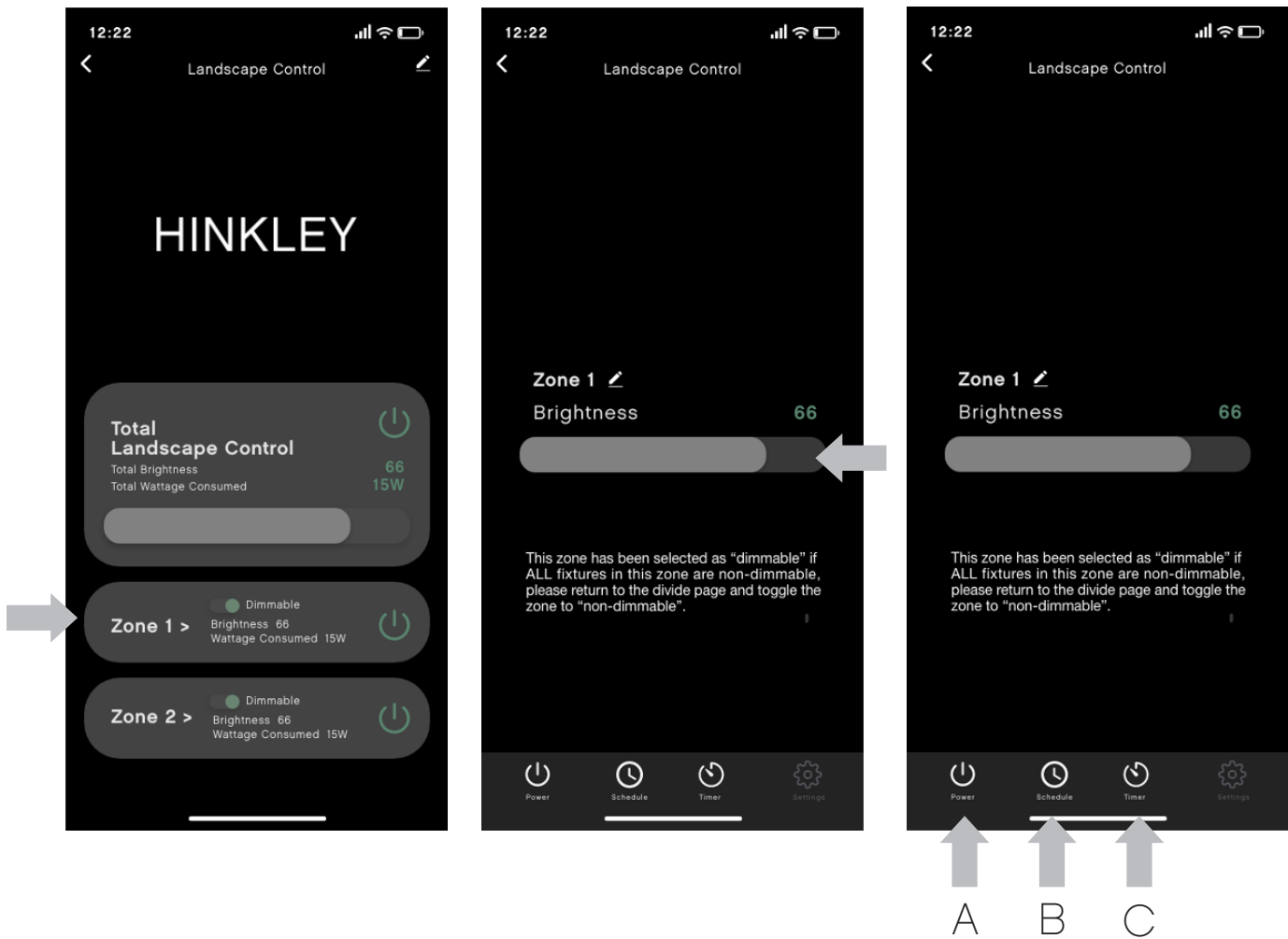
LANDSCAPE FUNCTIONALITY

CONTROLLING A LANDSCAPE DIMMER SWITCH



Quick On/Off Switch:

1. On the main dimmer panel, turn all zones on/off using the Total Landscape Control tab
2. Or, turn each zone on/off independently



Individual Zone Controls:

1. Choose a zone
2. Adjust the brightness using the slider. The green number above the slider indicates the brightness level
3. Use the buttons at the bottom of the screen for power, schedules, and timers
 - A. Power button for this zone only
 - B. Schedule button for the zone
 - C. Timer button

Scene Tab for Multiple Device Control

In addition to scheduling your devices individually on their own page to perform a scheduled command, you can also use the “Scene” tab from the home page to control multiple devices simultaneously, either through an automated schedule or a tap-to-run command.

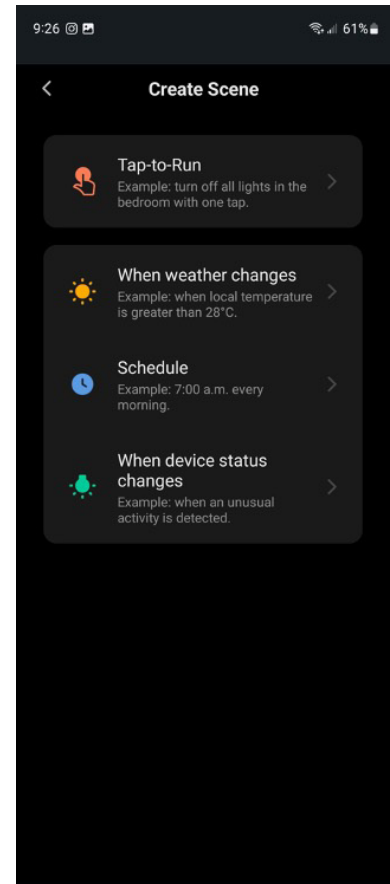
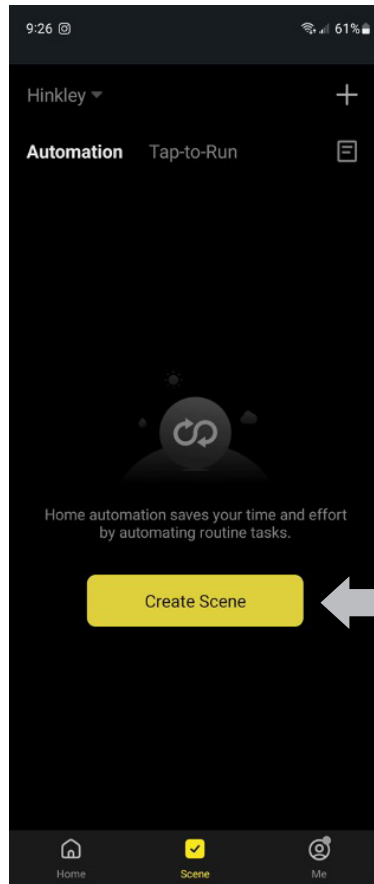
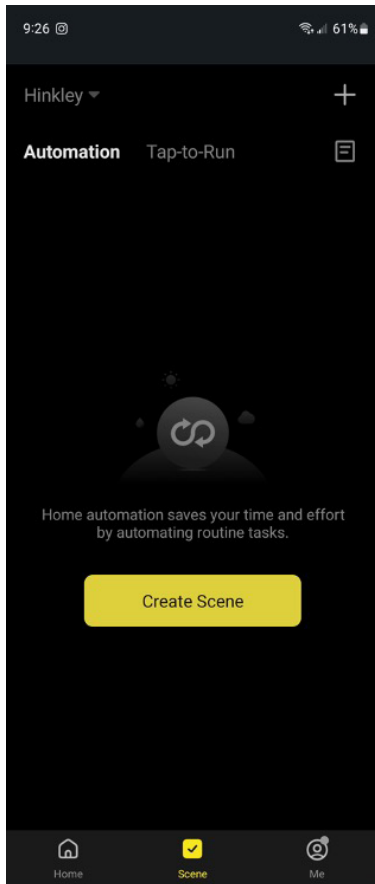
For automated scheduling and tap-to-run commands, you will create an “If-Then” set of commands for your device(s):

Ex) If the weather is >75 F, then turn on “device name,”
“device function,” “device setting”

Ex) If it’s 9 AM Monday, then turn on “device name,”
“device function,” “device setting”

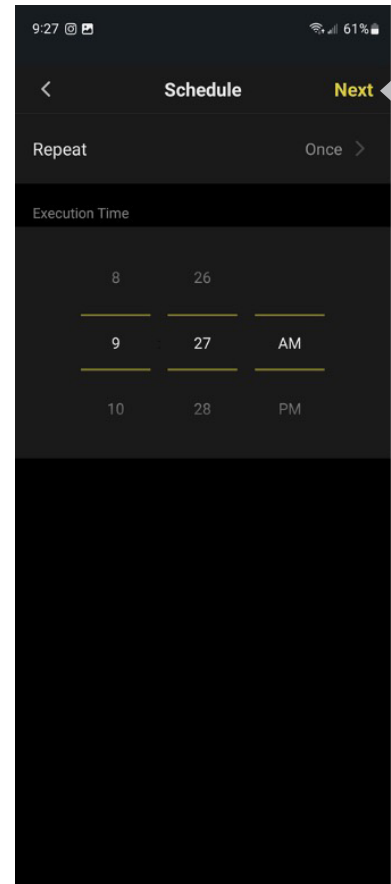
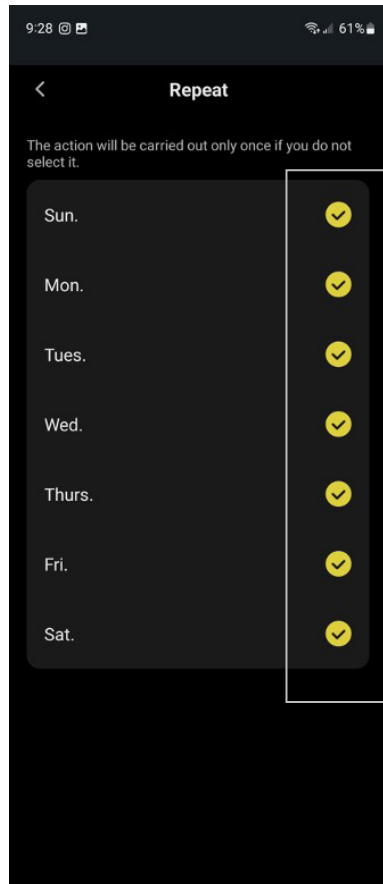
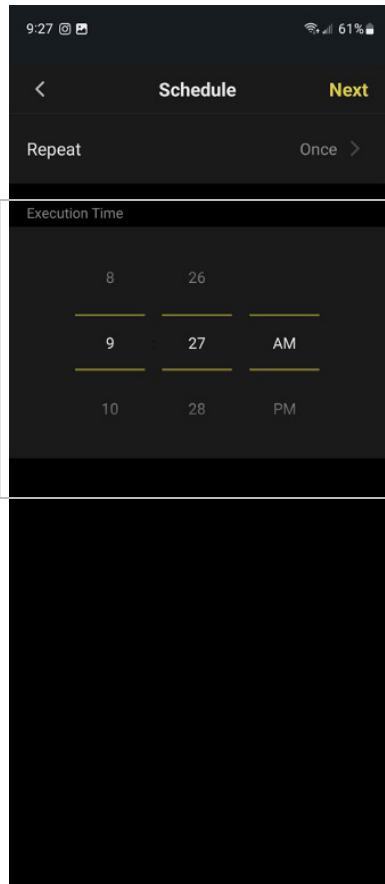
All scheduled commands will show under “automation” in the scene tab. You can toggle the scheduled commands on or off.

All tap-to-run commands will show under “tap-to-run” in the scene tab and the home page above your devices. You can also toggle the commands on or off.



Schedule Commands:

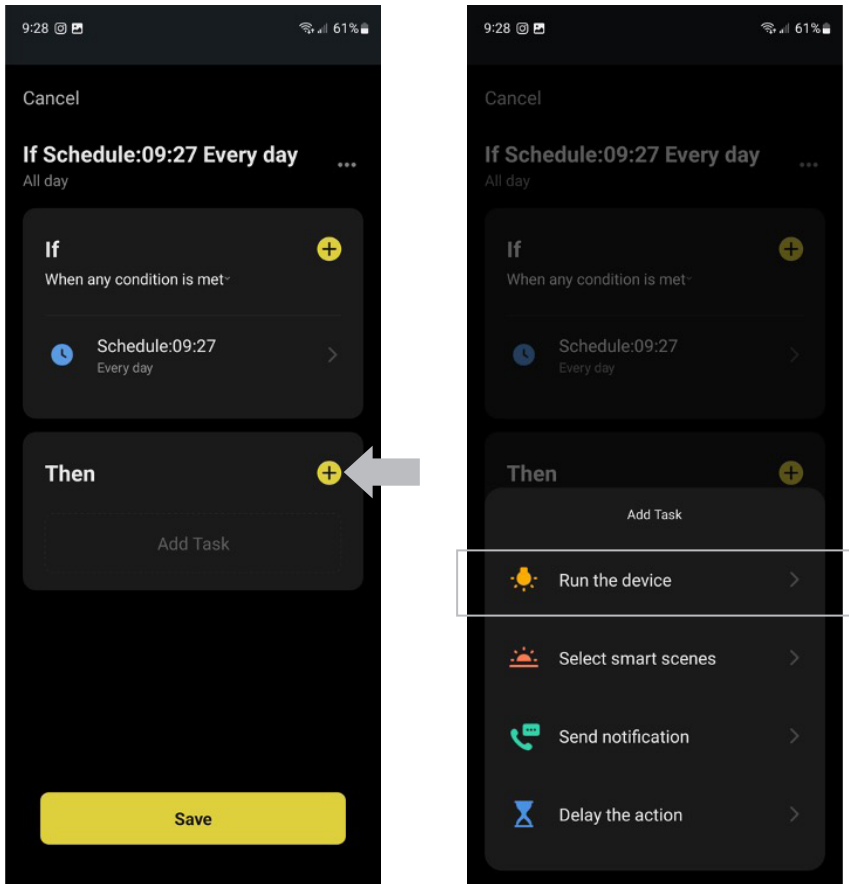
1. From the home page, select the “Scene” tab at the bottom of the screen
2. Select “Create Scene”
3. Select the “If” statement of the command – the following pages will use the “schedule” command



4. Select "Repeat" to choose the days to execute the command(s)

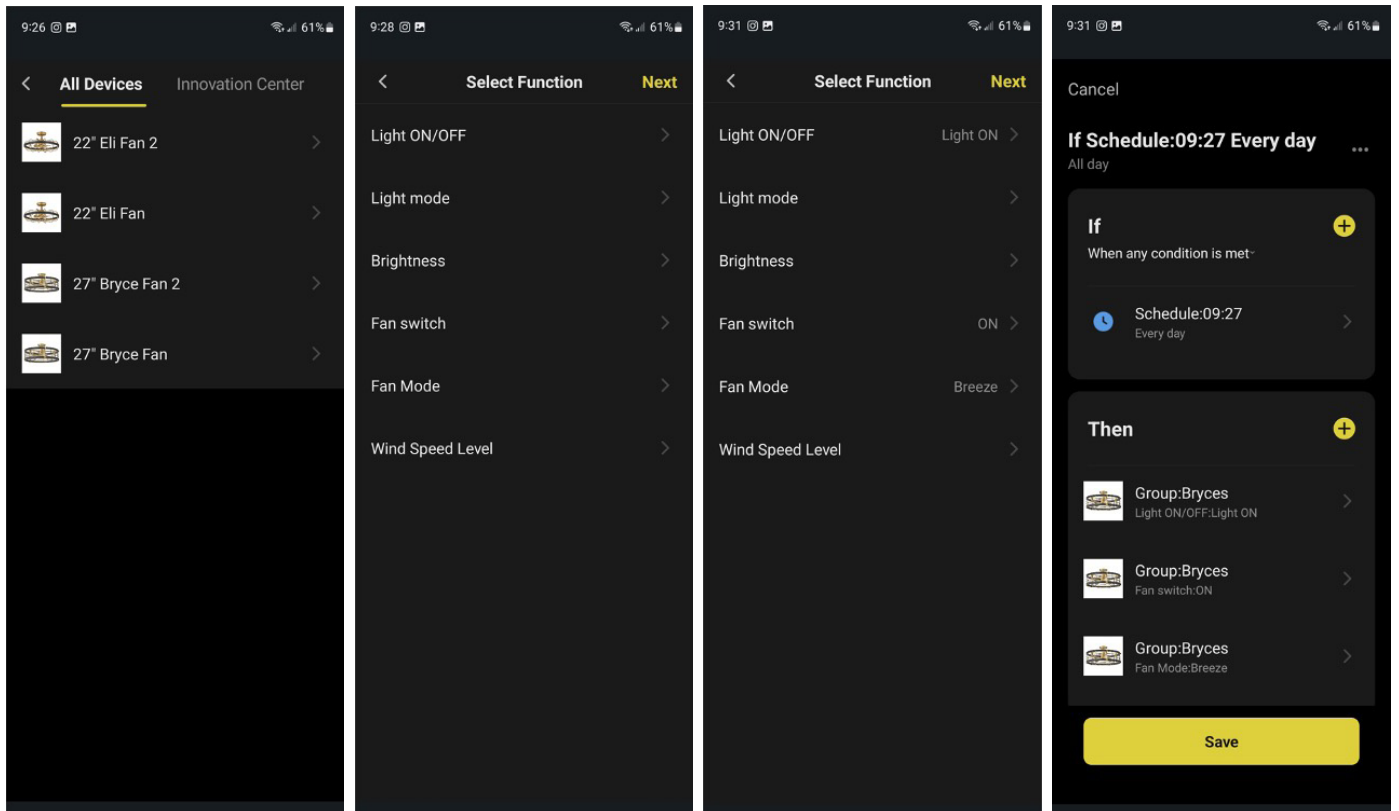
5. Choose the time

6. Once your schedule is set, hit the "next" button at the top



7. Now, you will create the “then” statement of device controls

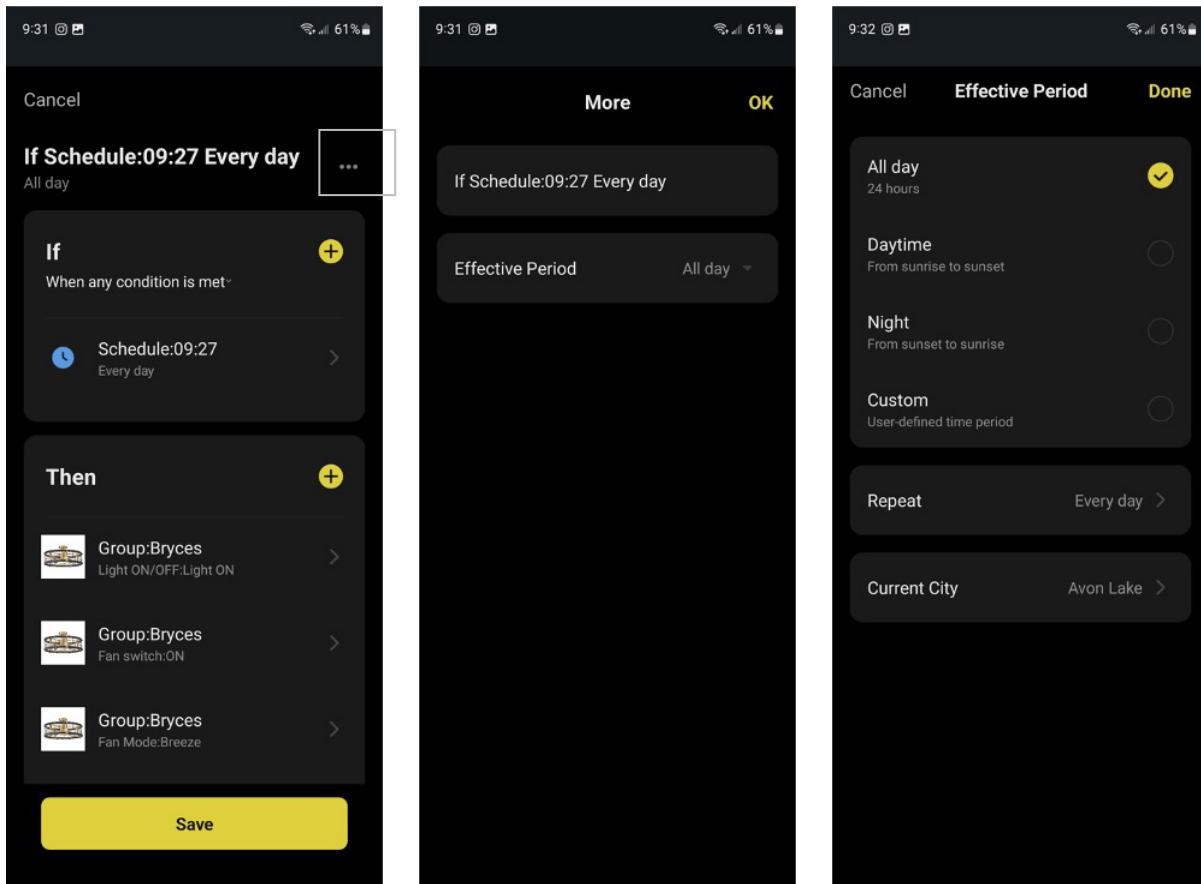
8. Select the “add” button for “then” and select your desired command – the following pages will use the “run the device” command



9. Select the device you wish to control with the command

10. Select the function of the device when the command is executed. Please note you can select multiple functions per device on this page

11. Once complete with the device, hit the “next” button. You can then select the “add” button again for “then” to add more devices and functions to the same schedule!

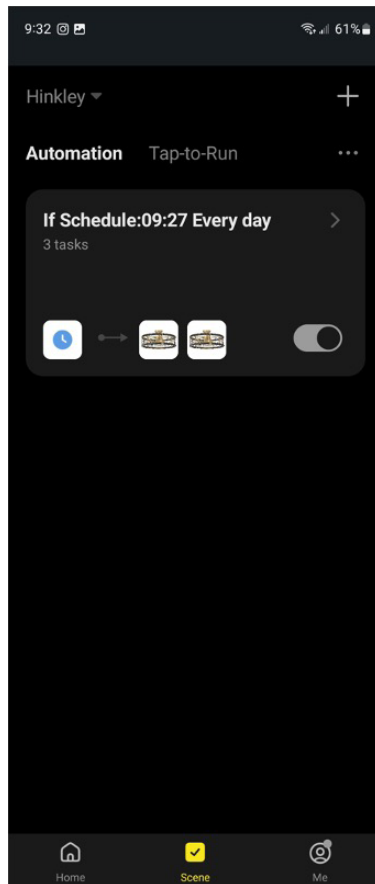
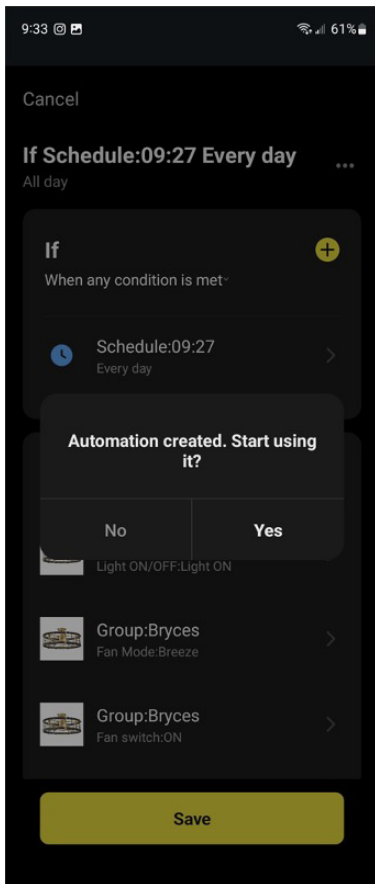


12. Select the “...” button to edit the schedule name and effective period of the schedule to perform the commands

Note – effective period is the time when the command is allowed to run. For most, “all day” should be selected with your “if” statement defining the time to execute the command

Ex) All day will result in no restricts to the command

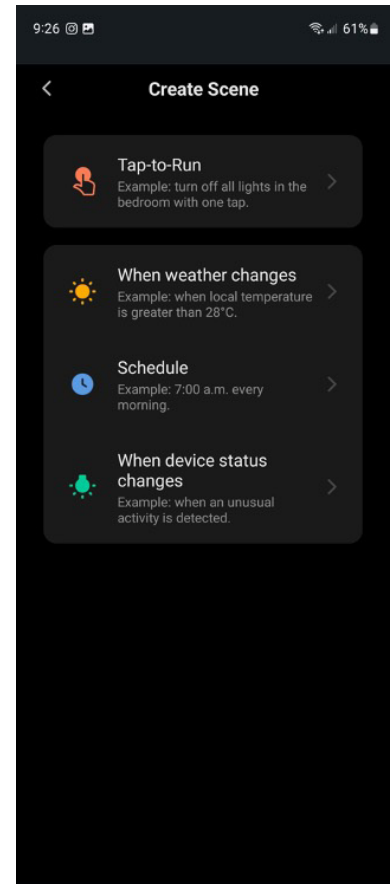
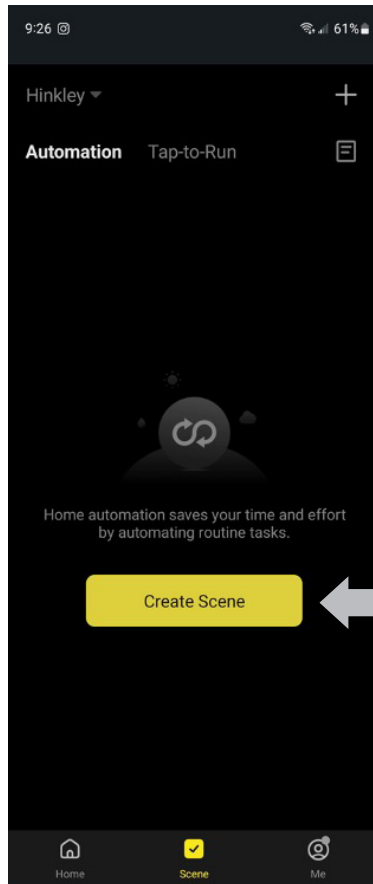
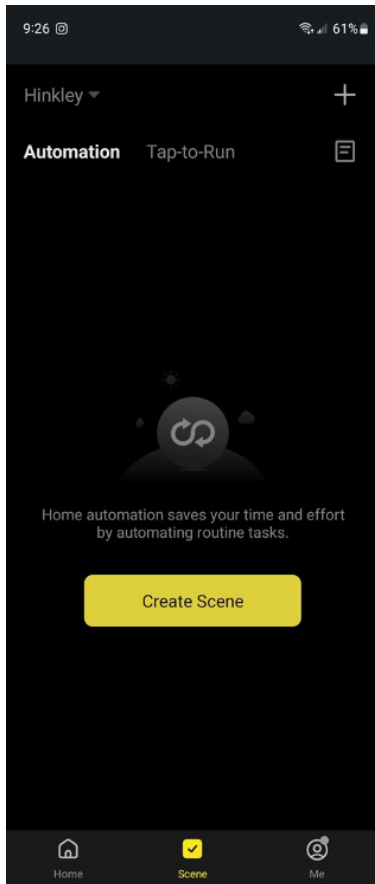
Ex) Daytime will only allow commands to run from sunrise to sunset. Any commands set outside of this time frame will NOT execute under this setting selection



13. Select “done” and “save” to complete the scene

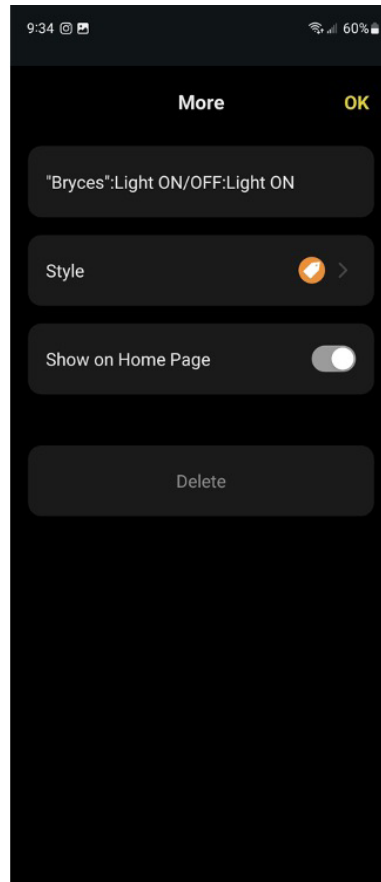
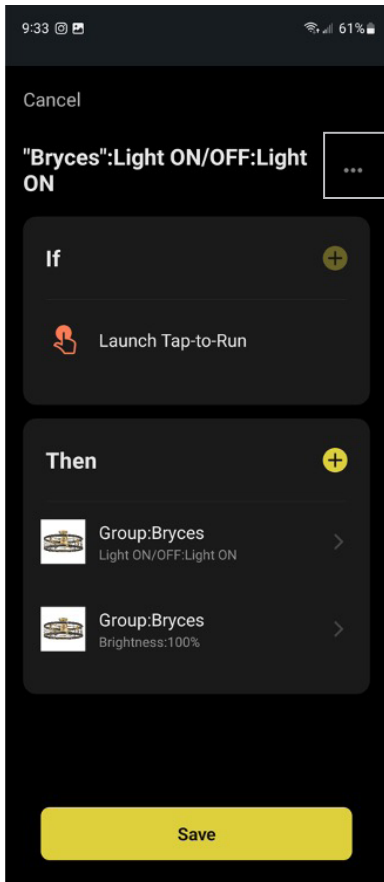
14. Confirm whether to begin using the automated schedule or not

Your scene will now show under “automation,” where you can toggle the schedule on/off as desired



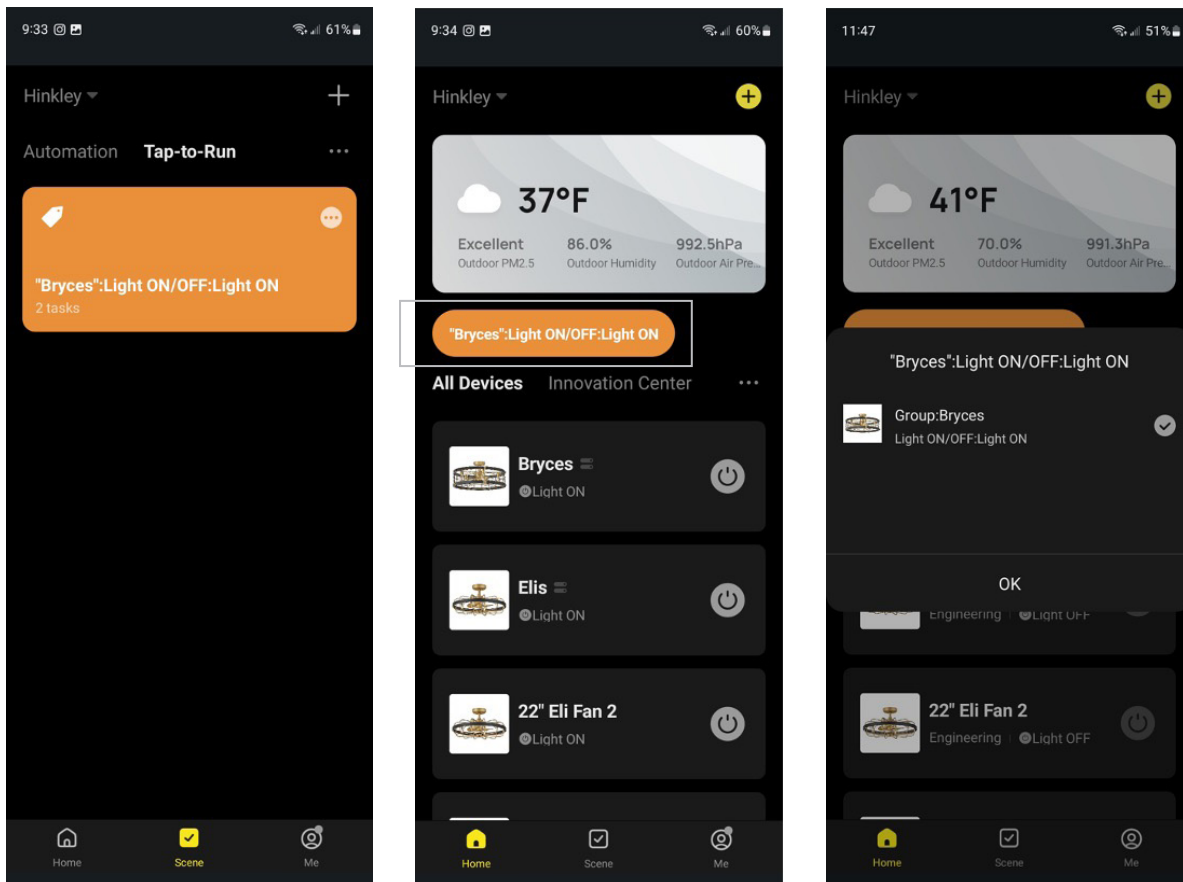
Tap to Run Commands:

1. From the home page, select the “Scene” tab
2. Select “create Scene”
3. Select the “If” statement of the command – the following pages will use the “tap-to-run” command



4. Following the same process as “scheduling,” select the devices and functions you wish to control with the “then” statement

5. Select the “...” button to change the name and label of the command – you can also select to show this command on the app home screen above your devices



6. Select “save” to complete the scene.

7. Your scene will now show under “tap-to-run,” where you can toggle the schedule on/off as desired

8. If “show on homepage” was selected, you will see the tap-to-run command on the homepage for single click function

9. Once tap-to-run is executed, a prompt of all commands to execute will show, as well as the status of the command request for each function